

<CN1> Engine I/F

Pin No.	Name	Pin No.	Name	Pin No.	Name	Pin No.	Name
1	OPSDA	21	C/BE2	41	LED0	61	XFRAME
2	OPREQ	22	XIRDY	42	GND	62	+5VE
3	OPCL	23	XTRDY	43	OPCS	63	XDEVSEL
4	GND	24	XSTOP	44	XOPRES	64	GND
5	CLK	25	XPERR	45	+5VE	65	XSERR
6	XRST	26	PAR	46	GND	66	GND
7	XGNT1	27	C/BE1	47	XINTA	67	AD15
8	XREQ1	28	AD14	48	GND	68	+5VE
9	AD31	29	AD13	49	AD30	69	AD12
10	AD29	30	AD11	50	+5VE	70	GND
11	AD28	31	AD10	51	AD27	71	AD9
12	AD26	32	AD8	52	GND	72	GND
13	AD25	33	C/BE0	53	AD24	73	AD7
14	C/BE3	34	AD6	54	GND	74	+5VE
15	N.C.	35	AD5	55	AD23	75	AD4
16	AD22	36	AD3	56	+5VE	76	GDN
17	AD21	37	AD2	57	AD20	77	AD1
18	AD19	38	AD0	58	GND	78	GND
19	AD18	39	XPWCTL	59	AD17	79	XENGRD
20	AD16	40	XFUKI	60	GND	80	+5VE

<CN2> PCI I/F (OP-NIC, IEEE1394, W-LAN, BLUETOOTH)

Pin No.	Name	Pin No.	Name	Pin No.	Name	Pin No.	Name
1	GND	21	GND	41	GND	61	C/BE2
2	GND	22	AD15	42	GND	62	AD17
3	AD0	23	AD18	43	AD1	63	AD19
4	AD2	24	AD20	44	AD3	64	AD21
5	AD4	25	AD22	45	AD5	65	AD23
6	AD6	26	GND	46	AD7	66	GND
7	GDN	27	GND	47	C/BE0	67	C/BE3
8	GND	28	AD24	48	GND	68	AD25
9	AD8	29	AD26	49	AD9	69	AD27
10	AD10	30	AD28	50	AD11	70	AD29
11	AD12	31	AD30	51	AD13	71	AD31
12	AD14	32	GND	52	AD15	72	GND
13	GND	33	CSSTXD	53	C/BE1	73	XREQ3
14	GND	34	CSRXD	54	GND	74	XGNT3
15	PAR	35	CSSTCS	55	XSERR	75	XINTC
16	XPERR	36	GND	56	XSTOP	76	GND
17	AD28	37	XPME	57	CSRSTS	77	XRST
18	XDEVSEL	38	GND	58	XTRDY	78	+5VE
19	XIRDY	39	CLK3	59	XFRAME	79	+5VE
20	GND	40	GND	60	GND	80	+5VE

<CN6> LAN I/F

Pin No.	Name	Pin No.	Name
1	TX+	5	RX-
2	TX-	6	RX+
3	RX+	7	-
4	RX-	8	-

<CN8> Debug Board I/F (2ch)

Pin No.	Name	Pin No.	Name
1	+5V	5	DBORXD
2	GDN	6	DBITXD
3	GDN	7	DBITRXD
4	DB0TXD	8	/NMI

<CN9> IEEE1284 I/F

Pin No.	Name	Pin No.	Name	Pin No.	Name	Pin No.	Name
1	CTSTB-CT	10	CTACK-CT	19	GND	28	GND
2	CNTRD1	11	CTBUSY-CT	20	GND	29	GND
3	CNTRD2	12	PE-CT	21	GND	30	GND
4	CNTRD3	13	SELECT-CT	22	GND	31	-INIT-CT
5	CNTRD4	14	AFD-CT	23	GND	32	-FAULT-CT
6	CNTRD5	15	N.C.	24	GND	33	GND
7	CNTRD6	16	GND	25	GND	34	N.C.
8	CNTRD7	17	GND	26	GND	35	N.C.
9	CNTRD8	18	PLH-CT	27	GND	36	-SLCIN-CT

<CN10> USB I/F

Pin No.	Name	Pin No.	Name
12	Vbus	1	GND
13	D-	2	+5VE
14	D+	3	/OPCS
15	GND	4	OPSDA
		5	OPREQ
		6	/OPRES
		7	/LED0
		8	OPCL
		9	+5VE
		10	GND

<CN11> Power

Pin No.	Name
1	+5VE
2	GND

<CN12> Operation Pannel

Pin No.	Name
1	GND
2	+5VE
3	/OPCS
4	OPSDA
5	OPREQ
6	/OPRES
7	/LED0
8	OPCL
9	+5VE
10	GND

<CN13> Debug Board I/F (1 ch)

Pin No.	Name
1	+5V
2	DBORXD
3	DB0TXD
4	GND

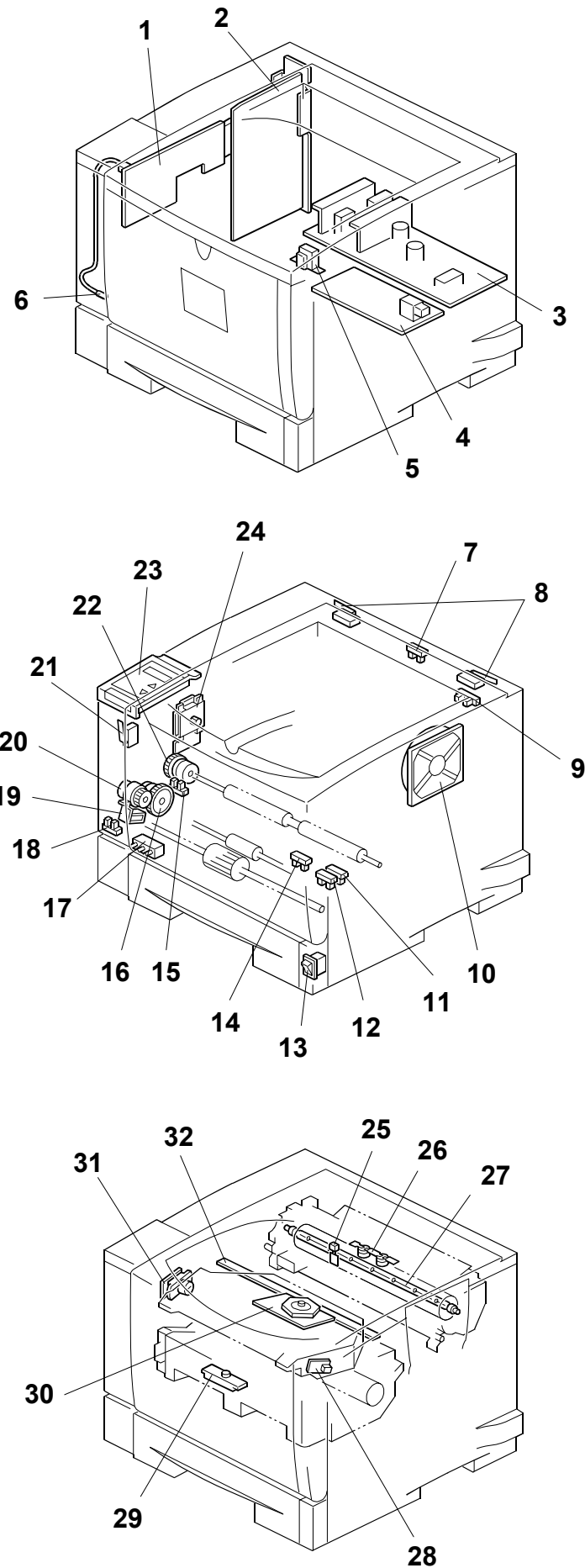
Signal Table

- AC Line
- DC Line
- - - Puls
- ← Signal Directio
- ▲ Active High
- ▼ Active Low
- [] Voltage

PRINTER (G094/G095)/DUPLX UNIT (G361)/PAPAER TRAY UNIT (G360) POINT TO POINT DIAGRAM

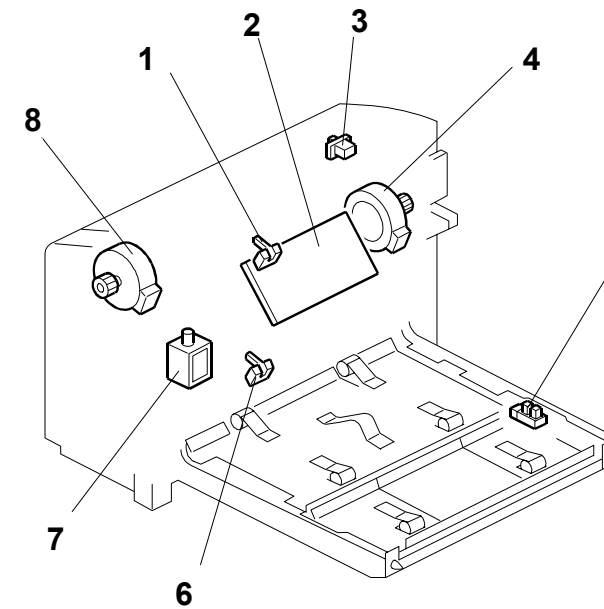
PRINTER (G094/G095)/DUPLEX UNIT (G361)/PAPER TRAY UNIT (G360) ELECTRICAL COMPONENT LAYOUT

Printer (G094/095)



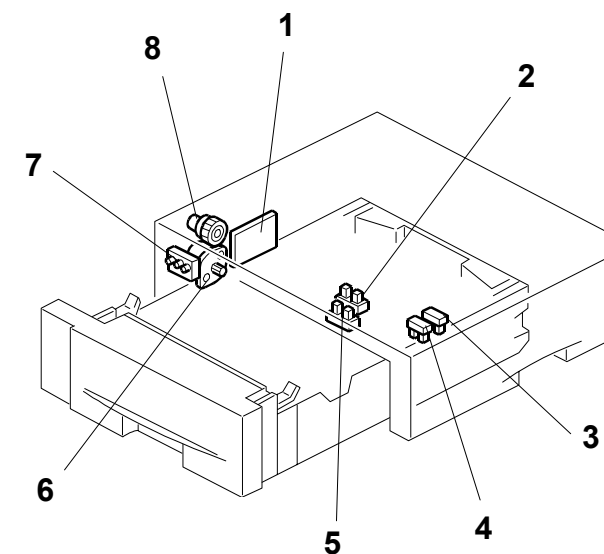
Symbol	Name	Index No.	P to P
Motors			
M1	Main	24	H6
M2	Polygonal Mirror	30	C6
M3	Exhaust Fan	10	H6
Magnetic Clutches			
MC1	Paper Feed	16	B6
MC2	Relay	20	B6
MC3	Registration	22	B6
Switches			
SW1	Paper Size	17	H6
SW2	Front Door	21	C5
SW3	Rear Cover	8	C5
SW4	Main	13	A4, C4
Sensors			
S1	Paper Exit	7	I6
S2	Paper Overflow	9	I6
S3, S4	Remaining paper	11, 12	H5
S5	Paper End	14	G5
S6	Toner End	29	G6
S7	Registration	15	G5
S8	By-pass paper	18	G6
PCBs			
PCB1	Engine	1	F5
PCB2	Printer controller	2	D5
PCB3	PSU (Power Supply Unit)	3	B3
PCB4	High Voltage Supply	4	A4
PCB5	LDD (Laser Diode Driver)	31	C6
PCB6	Operation Panel	23	E6
Solenoids			
SOL1	By-pass feed	19	A6
Lamps			
L1	Fusing	27	A3
L2	Quenching	32	D6
Others			
TM1	Thermostat	26	A3
TH1	Fusing Thermistor	25	A3
TH2	Internal Thermistor	6	E6
LSD1	Laser Synchronization Detector	28	C6
CC1	Choke Coil (230V machine only)	5	C4

Duplex Unit (G361)



Symbol	Name	Index No.	P to P
Motors			
M1	Inverter	8	E2
M2	Transport	4	F2
Sensors			
S1	Entrance	1	F4
S2	Exit	5	F4
S3	Inverter	6	F4
Switches			
SW1	Cover	3	F4
Solenoids			
SOL1	Inverter gate	7	F2
PCBs			
PCB1	Duplex board	2	F3

Paper Tray Unit (G360)



Symbol	Name	Index No.	P to P
Motor			
M1	Paper feed	6	H2
Sensors			
S1	Paper feed	5	H2
S2	Paper end	2	G2
S3, S4	Remaining paper	3, 4	G2
Switch			
SW1	Paper size	7	G2
Clutch			
MC1	Paper feed	8	H2
PCB			
PCB1	Paper tray board	1	G3